

ESTABLISHING A **NEW STANDARD** IN THE COMMERCIAL REFRIGERATION INDUSTRY.

**MINIMUM ENERGY CONSUMPTION, WITH  
A LARGE FOOTPRINT THAT MAXIMIZES  
INTERNAL CAPACITY.**

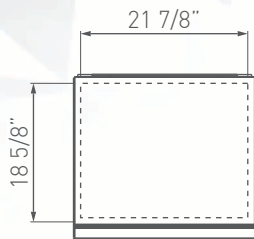


## KEY FEATURES

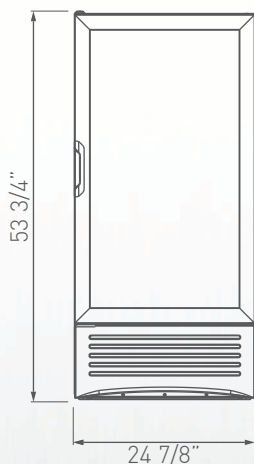
- **BMAD refrigeration system,** allow to cool down the interior and maintain the temperature range with a minimum energy consumption.
- **30 gauge exterior pre-painted steel,** brings years of duration.
- **Electronic temperature controller,** assures an optimal performance of the cooler, making the product temperature ideal for its consumption.
- **High efficiency glass door,** with a double panel and a low-e film reduces the condensation. Self closing system allow the door to get back to its original position, taking care not to damage it.
- **LED lighting system,** uses a portion of the energy of regular fluorescent lights, and need no replacement for seven years.
- **CFC and HFC free Cyclopentane foam,** is eco-friendly and a high efficiency insulator.
- **Electronic fan motors,** allow a better performance, using only a portion of the energy required by a shaded pole motor.
- **Low maintenance condenser,** prevents dust from blocking air flow and thus saving energy and increasing compressor's life.

ESTABLISHING A **NEW STANDARD** IN THE COMMERCIAL REFRIGERATION INDUSTRY.

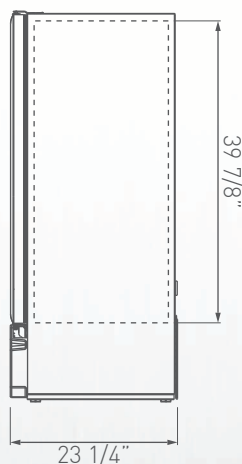
## PRODUCT VIEWS



**TOP VIEW**



**FRONT VIEW**



**SIDE VIEW**

## TECHNICAL SPECIFICATIONS

<b>Exterior Dimensions</b>	<b>L:</b>	24 7/8"	632 mm
	<b>D:</b>	23 1/4"	590 mm
	<b>H:</b>	53 3/4"	1365 mm

<b>Interior Dimensions</b>	<b>L:</b>	21 7/8"	555 mm
	<b>D:</b>	18 5/8"	472 mm
	<b>H:</b>	39 7/8"	1013 mm

<b>Shelf Size</b>	<b>L:</b>	20 7/8"	530 mm
	<b>D:</b>	17 3/8"	440 mm

<b>Weight</b>	180.8 Lbs	82.0 Kg
---------------	-----------	---------

<b>Shelves</b>	3
----------------	---

<b>Capacity 20oz.</b>	<b>Flat:</b>	126
	<b>Gravity:</b>	108

## REFRIGERATION DATA

<b>Energy Consumption</b>	1.740 kWh/day
---------------------------	---------------

<b>Voltage</b>	115/60
----------------	--------

<b>Horse Power</b>	1/8
--------------------	-----

<b>AMPS</b>	3.0
-------------	-----

## LOGISTIC

<b>Trailer Loads</b>	40':	54
	53':	80

<b>Certifications</b>	<b>UL:</b>	✓
	<b>ES:</b>	✓
	<b>EPH/NSF:</b>	✓

### Warranty:

One year limited warranty on all parts and labor, an additional 4 year warranty on compressor. (USA and Canada only)

Dimensions rounded up to the nearest inch or millimeter. Specifications subject to change without notice.

Customer Service: 866-363-0079 | [WWW.IMBERAFOODSERVICE.COM](http://WWW.IMBERAFOODSERVICE.COM)

\* Energy consumption based on ANSI/ASHRAE Standard 72-2005.

BMAD System (Low maintenance high performance).  
Dimensions rounded up to the nearest inch or millimeter.  
Specifications subject to change without notice.