

ESTABLISHING A **NEW STANDARD** IN THE COMMERCIAL REFRIGERATION INDUSTRY.

THE **MOST ENERGY EFFICIENT** COOLER IN ITS CATEGORY. SPECIFICALLY DESIGNED FOR **CONVENIENCE STORES AND SUPERMARKETS**.

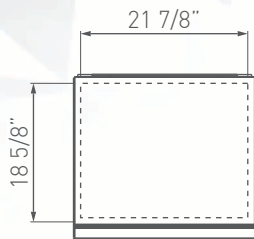


➤ KEY FEATURES

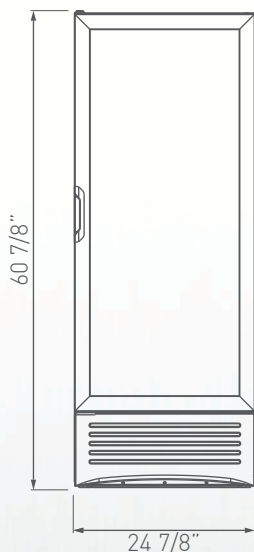
- **BMAD refrigeration system,** allow to cool down the interior and maintain the temperature range with a minimum energy consumption.
- **30 gauge exterior pre-painted steel,** brings years of duration.
- **Electronic temperature controller,** assures an optimal performance of the cooler, making the product temperature ideal for its consumption.
- **High efficiency glass door,** with a double panel and a low-e film reduces the condensation. Self closing system allow the door to get back to its original position, taking care not to damage it.
- **LED lighting system,** uses a portion of the energy of regular fluorescent lights, and need no replacement for seven years.
- **CFC and HFC free Cyclopentane foam,** is eco-friendly and a high efficiency insulator.
- **Electronic fan motors,** allow a better performance, using only a portion of the energy required by a shaded pole motor.
- **Low maintenance condenser,** prevents dust from blocking air flow and thus saving energy and increasing compressor's life.

ESTABLISHING A **NEW STANDARD** IN THE COMMERCIAL REFRIGERATION INDUSTRY.

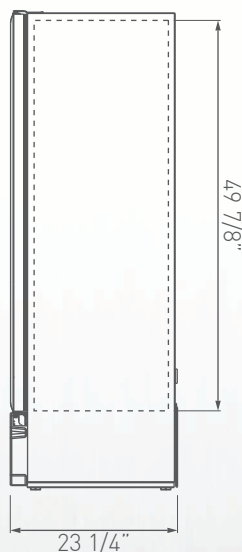
PRODUCT VIEWS



TOP VIEW



FRONT VIEW



SIDE VIEW

TECHNICAL SPECIFICATIONS

Exterior Dimensions	L:	24 7/8"	632 mm
	D:	23 1/4"	590 mm
	H:	60 7/8"	1624 mm

Interior Dimensions	L:	21 7/8"	555 mm
	D:	18 5/8"	472 mm
	H:	49 7/8"	1266 mm

Shelf Size	L:	20 7/8"	530 mm
	D:	17 3/8"	440 mm

Weight	183.0 Lbs	83.0 Kg
---------------	-----------	---------

Shelves	4
----------------	---

Capacity 20oz.	Flat:	168
	Gravity:	144

REFRIGERATION DATA

Energy Consumption	2.390 kWh/day
---------------------------	---------------

Voltage	115/60
----------------	--------

Horse Power	1/6
--------------------	-----

AMPS	4.0
-------------	-----

LOGISTIC

Trailer Loads	40':	54
	53':	80

Certifications	UL:	✓
	ES:	✓
	EPH/NSF:	✓

Warranty:

One year limited warranty on all parts and labor, an additional 4 year warranty on compressor. (USA and Canada only)

Dimensions rounded up to the nearest inch or millimeter. Specifications subject to change without notice.

Customer Service: 866-363-0079 | WWW.IMBERAFOODSERVICE.COM

* Energy consumption based on ANSI/ASHRAE Standard 72-2005.

BMAD System (Low maintenance high performance).
Dimensions rounded up to the nearest inch or millimeter.
Specifications subject to change without notice.