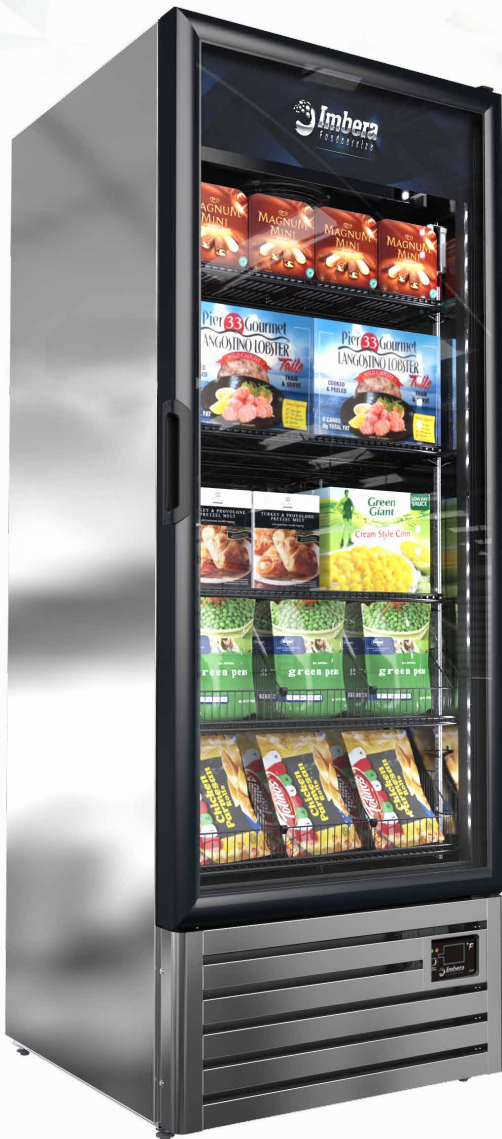




VFS24_{SS}

ESTABLISHING A **NEW STANDARD** IN THE COMMERCIAL REFRIGERATION INDUSTRY.

HIGHLY EFFICIENT GLASS DOOR FREEZER IN STAINLESS STEEL FINISH, PERFECT FOR PRESERVING FROZEN PRODUCTS WHILE PROVIDING A BEAUTIFUL DISPLAY



KEY FEATURES

BMAD

• BMAD Refrigeration System

Ensures rapid and effective cabinet cool down with minimum energy consumption.



• Electronic Temperature Controller

Patented CIF electronic controller assures optimal refrigeration performance through precision temperature control, and intelligent control for defrost cycle, compressor & other component functions.



• Electronic Fan Motors

Enhances performance and efficiency. Uses only a fraction of the energy and offers longer life expectancy than industry standard shaded-pole motors.



• High Efficiency Glass Door

Equipped with double/triple panel glass and low e-film to reduce condensation. Safety glass external door pane. Lightweight Plastic doorframe design. Self-closing door hinge. Zero profile pocket handle.



• LED Lighting System

LED uses a fraction of the energy of regular florescent lights and requires no replacement for up to seven years. Imbera standard modular standard design, with multiple 1' LED modules, allows for efficient replacement or upgrade to new bright LED options and are backward compatible to 2008.



• CFC and HFC Free Cyclopentane Foam

Eco-friendly, recyclable and high efficiency cabinet insulation.



• Front Grill

Stainless steel grill in unique, modern design. Provides superior impact resistance and is easy to remove for condenser maintenance.

CERTIFICATIONS



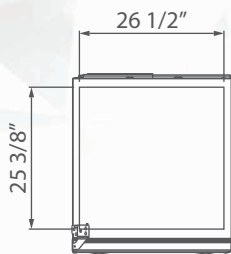
COMMERCIAL REFRIGERATOR
AND/OR FREEZER
5242



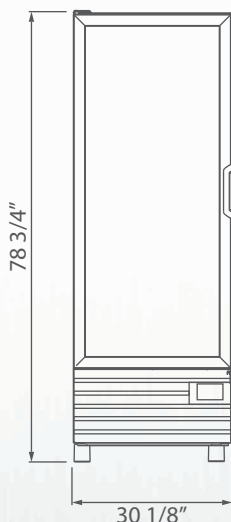
NSF/ANSI 7 COMMERCIAL REFRIGERATOR
AND/OR FREEZER
2011

ESTABLISHING A **NEW STANDARD** IN THE COMMERCIAL REFRIGERATION INDUSTRY.

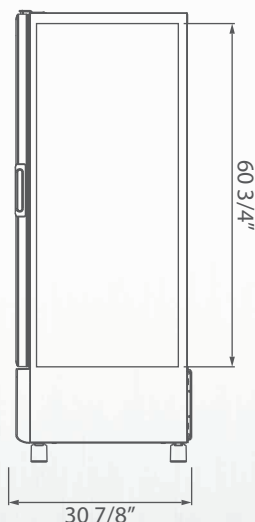
PRODUCT VIEWS



TOP VIEW



FRONT VIEW



SIDE VIEW

Warranty:
Three year limited warranty on all parts and labor, an additional two year warranty on compressor. (USA and Canada only)

Dimensions rounded up to the nearest inch or millimeter.
Specifications subject to change without notice.

Customer Service: 866-363-0079 | WWW.IMBERAFOODSERVICE.COM

TECHNICAL SPECIFICATIONS

Exterior Dimensions

H:	78 3/4"	2000 mm
W:	30 1/8"	765 mm
D:	30 7/8"	785 mm

Interior Dimensions

H:	60 3/4"	1544 mm
W:	26 1/2"	672 mm
D:	25 3/8"	646 mm

Usable Interior Capacity

H:	53 1/8"	1350 mm
W:	26 1/2"	672 mm
D:	24 7/8"	632 mm

Usable Volume

20.24 ft ³
573.35 lts

Doors

1

Doors Construction

Standard Black Plastic Frame

Shelves

5

Shelf Size & Gauge

W:	25 3/4"	653 mm
D:	21 1/4"	541 mm

REFRIGERATION PERFORMANCE DATA

Refrigerant 404a

0.05 kg

Energy Consumption

12.674 kWh/day*

Compressor Power

3/4 HP
400 watts

Condenser

3.5 Fin per Inch

Thermostat Setting
Default

Cut-Out
-10°F (-23°C)

Cut-In
-5°F (-20.5°C)

ELECTRICAL DATA

Power Supply

115v 60 Hz

AMPS

7

Cord Length

118'
3000mm

Lighting

220 Lux output
9 modules
6 LED per module

Plug Type

NEMA 5-15P

Controller

Imbera CIR controller
Pre-programmed temperatures

LOGISTIC DATA

Trailer Loads

53':	60
40':	42

Unit Weight w/packaging

378 Lbs
179 kg

Dimensions w/packaging

H:	82 5/8"	2100 mm
W:	32 1/4"	820 mm
D:	29 7/8"	760 mm

*Energy consumption based on ANSI/ASHRAE Standard 72-2005.

BMAD System (Low maintenance high performance).
Dimensions rounded up to the nearest inch or millimeter.
Specifications subject to change without notice.