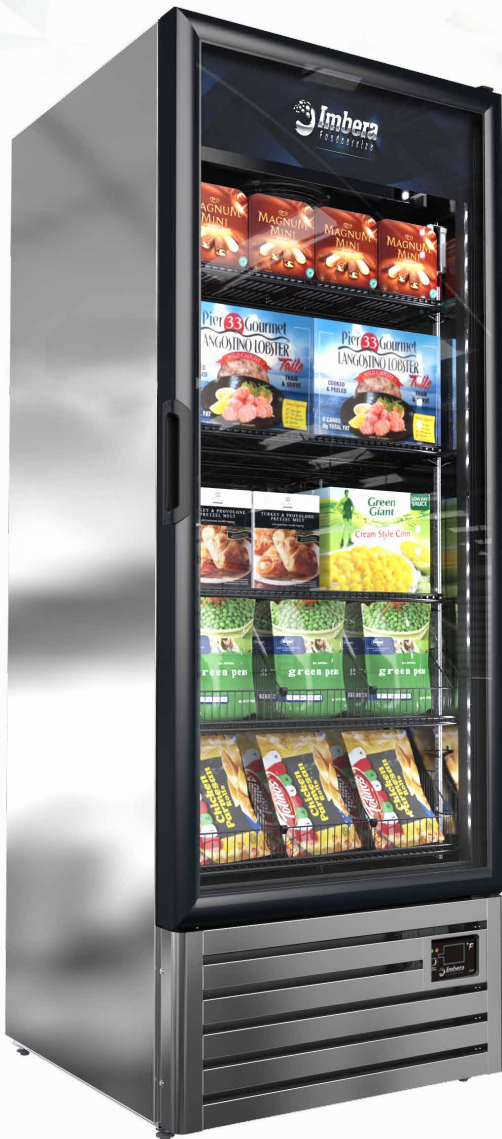




VFS24_{SS}

ESTABLISHING A **NEW STANDARD** IN THE COMMERCIAL REFRIGERATION INDUSTRY.

HIGHLY EFFICIENT GLASS DOOR FREEZER IN STAINLESS STEEL FINISH, PERFECT FOR PRESERVING FROZEN PRODUCTS WHILE PROVIDING A BEAUTIFUL DISPLAY



KEY FEATURES

BMAD

• BMAD Refrigeration System

Ensures rapid and effective cabinet cool down with minimum energy consumption.



• Electronic Temperature Controller

Patented CIF electronic controller assures optimal refrigeration performance through precision temperature control, and intelligent control for defrost cycle, compressor & other component functions.



• Electronic Fan Motors

Enhances performance and efficiency. Uses only a fraction of the energy and offers longer life expectancy than industry standard shaded-pole motors.



• High Efficiency Glass Door

Equipped with double/triple panel glass and low e-film to reduce condensation. Safety glass external door pane. Lightweight Plastic doorframe design. Self-closing door hinge. Zero profile pocket handle.



• LED Lighting System

LED uses a fraction of the energy of regular florescent lights and requires no replacement for up to seven years. Imbera standard modular standard design, with multiple 1' LED modules, allows for efficient replacement or upgrade to new bright LED options and are backward compatible to 2008.



• CFC and HFC Free Cyclopentane Foam

Eco-friendly, recyclable and high efficiency cabinet insulation.



• Front Grill

Stainless steel grill in unique, modern design. Provides superior impact resistance and is easy to remove for condenser maintenance.

CERTIFICATIONS

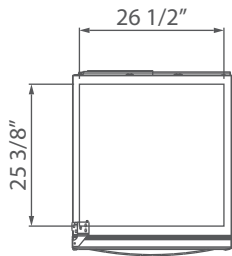


COMMERCIAL REFRIGERATOR
AND/OR FREEZER
5242

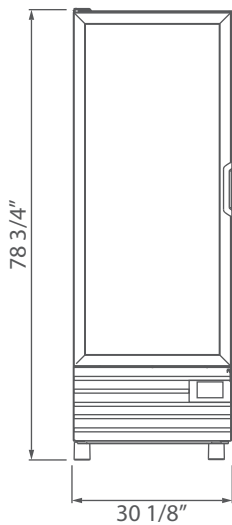


NSF/ANSI 7 COMMERCIAL REFRIGERATOR
AND/OR FREEZER
2011

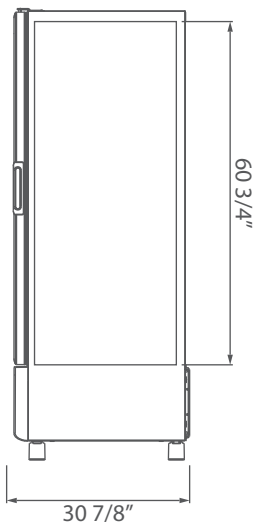
PRODUCT VIEWS



TOP VIEW



FRONT VIEW



SIDE VIEW

Warranty:
Three year limited warranty on all parts and labor, an additional two year warranty on compressor. (USA and Canada only)

Dimensions rounded up to the nearest inch or millimeter.
Specifications subject to change without notice.

Customer Service: 866-363-0079 | WWW.IMBERAFOODSERVICE.COM

TECHNICAL SPECIFICATIONS

Exterior Dimensions			Interior Dimensions		
H:	78 3/4"	2000 mm	H:	60 3/4"	1544 mm
W:	30 1/8"	765 mm	W:	26 1/2"	672 mm
D:	30 7/8"	785 mm	D:	25 3/8"	646 mm
Usable Interior Capacity			Usable Volume		
H:	53 1/8"	1350 mm	20.24 ft³		
W:	26 1/2"	672 mm	573.35 lts		
D:	24 7/8"	632 mm			
Doors		Doors Construction			
1		Standard Black Plastic Frame			
Shelves		Shelf Size & Guage			
5		W: 25 3/4" 653 mm			
		D: 21 1/4" 541 mm			

REFRIGERATION PERFORMANCE DATA

Refrigerant 404a		Energy Consumption	
0.05 kg		12.674 kWh/day*	
Compressor Power		Condenser	
3/4 HP 400 watts		3.5 Fin per Inch	
Thermostat Setting	Cut-Out	Cut-In	
Default	-10°F (-23°C)	-5°F (-20.5°C)	

ELECTRICAL DATA

Power Supply	AMPS	Cord Length	Lighting
115v 60 Hz	7	118' 3000mm	220 Lux output 9 modules 6 LED per module
Plug Type	Controller		
NEMA 5-15P	Imbera CIR controller Pre-programmed temperatures		

LOGISTIC DATA

Trailer Loads		Unit Weight	Dimensions w/packaging	
53': 60		378 Lbs	H:	82 5/8" 2100 mm
40': 42		179 kg	W:	32 1/4" 820 mm
			D:	29 7/8" 760 mm

*Energy consumption based on ANSI/ASHRAE Standard 72-2005.

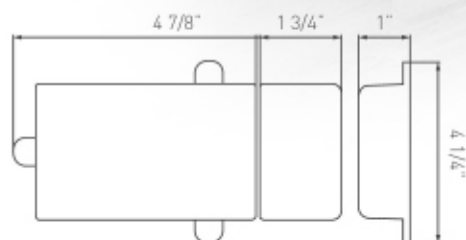
BMAD System (Low maintenance high performance).
Dimensions rounded up to the nearest inch or millimeter.
Specifications subject to change without notice.

THE IMBERA LOCK CONTROLLER IS A MECHANICAL AND ELECTRONIC LOCKING SYSTEM THAT PREVENTS CUSTOMERS FROM ACCESSING FOOD ITEMS FROM THE COOLER, IF TEMPERATURE RISES ABOVE 41.9°F FOR A PREDETERMINED PERIOD OF TIME.



IDEAL FOR UNATTENDED LOCATIONS

PerformaX30
Imbera



COOLER LOCK AVAILABLE ON
IMBERA G319 COOLER & VFS24 FREEZER
(NOW ALSO NOW AVAILABLE
IN STAINLESS STEEL CABINET*)

COOLER RECOMMENDED STANDARD OPERATING TEMPERATURE RANGE

	T min °F	T max °F
FREEZER	-10	-5
ICE CREAM	-17	-13

KEY FEATURES

• ELECTRONIC LOCK AUTOMATION FUNCTIONALITY

- Automatically locks when consumer protection is required.
 - Standard Health Lock timer ensures cooler will lock if product temperature remains above 41.9°F for longer than 15 minutes.
 - Monitors door openings and extends lock timer up to 45 minutes, if a door opening was detected within the previous hour (If product temperature remains above 41.9° after the initial 15 minutes).*
 - Uses thermal mass on Lock temperature probe, to replicate internal product temperature, for optimal lock controller operation, thus reducing the potential for unnecessary locking.*
 - Locks within 2 minutes of AC power loss and remains locked until power is restored. After AC power is restored, device will unlock if temperatures have remained within lock timer parameters.*
- * (Saving operators from performing a manual unlocking location visit and loss of customer sales)

RESTOCK & EXTENDED TIMER FUNCTION

- An extended lock timer function is available and will extend up to 165 min, to reach Tmax 41F, provided the refrigeration system is operating correctly and continual temperature reduction is recorded.

• OTHER USER FUNCTIONS

- Can be locked & unlocked independently of health timer.
- Tamperproof Triteq or P1 key electronic key for safety.
- Health Inspector Lock test switch is provided to meet local audit procedures. Hidden, but easily accessible.
- Alerts for lock activity.

• TRITEQ FRESH IQ LOCK

- Designed and manufactured by Imbera and Triteq, leaders in intelligent refrigeration and vending security solutions.
- Compatible with any Triteq or P1 key and AutoTraQ.

• CERTIFICATIONS

UL ✓