



VRD43 HC BLACK

ESTABLISHING A **NEW STANDARD** IN THE COMMERCIAL REFRIGERATION INDUSTRY.

Energy efficient, environmentally friendly, featuring spark-free components, low refrigerant charge and the most attractive product display.



KEY FEATURES



• **Eco-Friendly HC Natural Refrigerant**
New R290 HFC-free refrigerant gas that reduces environmental impact and increases efficiency.



• **Electronic Temperature Controller**
Patented ETC1H electronic controller assures optimal refrigeration performance through precision temperature control, and intelligent control for defrost cycle, compressor & other component functions.



• **Electronic Fan Motors**
Enhances performance and efficiency. Uses only a fraction of the energy and offers longer life expectancy than industry standard shaded-pole motors.



• **Newly Designed Condenser**
New condenser featuring a joints reduction down to zero increasing long term refrigeration reliability and safeguarding against any system leaks.



• **LED Efficiency +220 LUX Minimum Output**
New 5th generation constant power ultra-high efficiency LED uses lowest energy possible, with highest light output.



• **Spark-Free Refrigeration Components**
All HC models will have spark free refrigeration components for optimal safety, per UL requirements.

CERTIFICATIONS

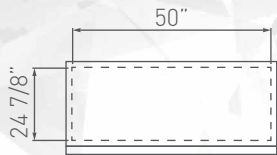


DOE 2017

COMMERCIAL REFRIGERATOR AND/OR FREEZER 5242

NSF/ANSI 7 COMMERCIAL REFRIGERATOR AND/OR FREEZER 2017

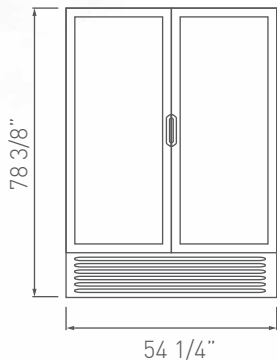
ESTABLISHING A **NEW STANDARD** IN THE COMMERCIAL REFRIGERATION INDUSTRY.



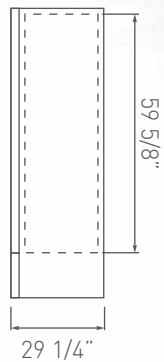
TOP VIEW

PRODUCT VIEWS

Dimensions rounded up to the nearest inch or millimeter. Specifications subject to change without notice.



FRONT VIEW

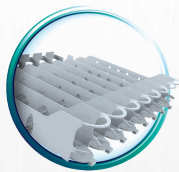


SIDE VIEW

EXTRA OPTIONS



Stainless Steel Door Frame
Options available



Interior merchandising options include gravity kits, Sandwich Trays and freezer baskets



Casters and Legs
Available



Lock options with different capabilities available

Customer Service: 866-548-5770 | WWW.IMBERAFOODSERVICE.COM

Three year limited warranty is included on all parts and labor. An additional two year warranty is issued on the compressor (USA & Canada only).

Operators must follow installation and operational guidelines per Imbera Users Manual and each cooler must have its own power supply, or warranty will be void.

TECHNICAL SPECIFICATIONS

Exterior Dimensions

H:	78 5/8"	1997 mm
W:	54 1/8"	1375 mm
D:	29 3/4"	756 mm

Interior Dimensions

H:	59 5/8"	1515 mm
W:	50"	1270 mm
D:	24 7/8"	633 mm

Usable Interior Capacity

H:	53 1/4"	1355 mm
W:	50"	1270 mm
D:	24 7/8"	633 mm

Usable Volume

41.66 ft ³
1180 lts

Capacity 20 oz. Bottle

Flat: 560

Doors

2

Doors Construction

Standard Black Plastic Frame

Shelves

10

Shelf Size & Gauge

W:	24 1/4"	615 mm
D:	19 3/4"	501 mm

REFRIGERATION PERFORMANCE DATA

Refrigerant R290

3.52 oz

Energy Consumption

3.290 kWh/day*

Compressor Power

3/4 HP

Condenser

Finless

Evaporator

Dynamic

Thermostat Setting

Default

Cut-Out

32°F (0°C)

Cut-In

44.6°F (7°C)

Noise

54.50 dB

ELECTRICAL DATA

Power Supply

115v 60 Hz

AMPS

8.7 kWh/day

Cord Length

118'
3000mm

Lighting

411.80 Lux output
18 modules
8 LED per module

Plug Type

PC-731

Controller

Imbera ETC1H controller
Pre-programmed temperatures

LOGISTIC DATA

Trailer Loads

53':	30
40':	24

Unit Weight w/packaging

501.8 Lbs
227.6 kg

Dimensions w/packaging

H:	82 1/2"	2097 mm
W:	56 1/2"	1432 mm
D:	31 3/8"	798 mm

*Energy consumption based on ANSI/ASHRAE Standard 72-2005.

BMAD System (Low maintenance high performance). Dimensions rounded up to the nearest inch or millimeter. Specifications subject to change without notice.