

ESTABLISHING A **NEW STANDARD** IN THE COMMERCIAL REFRIGERATION INDUSTRY.

HIGHLY EFFICIENT GLASS DOOR FREEZER IN STAINLESS STEEL FINISH, PERFECT FOR PRESERVING FROZEN PRODUCTS WHILE PROVIDING A BEAUTIFUL DISPLAY

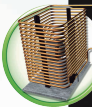


KEY FEATURES

BMAD

• BMAD Refrigeration System

Ensures rapid and effective cabinet cool down with minimum energy consumption.



• Low Maintenance Condenser

Designed to reduce dust & debris accumulation, which significantly reduces service frequency and run time. Delivers lowest ongoing energy consumption and guarantees refrigeration system longevity.



• Electronic Temperature Controller

Patented CIF electronic controller assures optimal refrigeration performance through precision temperature control, and intelligent control for defrost cycle, compressor & other component functions.



• Electronic Fan Motors

Enhances performance and efficiency. Uses only a fraction of the energy and offers longer life expectancy than industry standard shaded-pole motors.



• High Efficiency Glass Door

Equipped with double/triple panel glass and low e-film to reduce condensation. Safety glass external door pane. Lightweight Plastic doorframe design. Self-closing door hinge. Zero profile pocket handle.



• LED Lighting System

LED uses a fraction of the energy of regular florescent lights and requires no replacement for up to seven years. Imbera standard modular standard design, with multiple 1' LED modules, allows for efficient replacement or upgrade to new bright LED options and are backward compatible to 2008.



• CFC and HFC Free Cyclopentane Foam

Eco-friendly, recyclable and high efficiency cabinet insulation.



• Front Grill

Stainless steel grill in unique, modern design. Provides superior impact resistance and is easy to remove for condenser maintenance.

CERTIFICATIONS

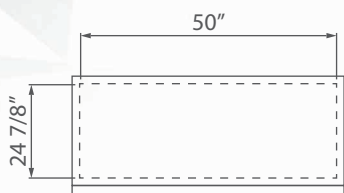


COMMERCIAL REFRIGERATOR
AND/OR FREEZER
5242

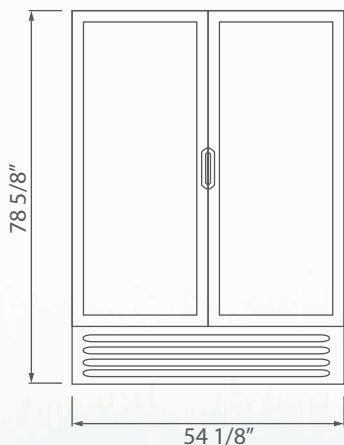
NSF/ANSI 7 COMMERCIAL REFRIGERATOR
AND/OR FREEZER
2011

ESTABLISHING A **NEW STANDARD** IN THE COMMERCIAL REFRIGERATION INDUSTRY.

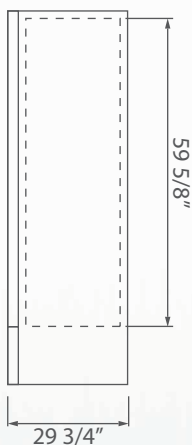
PRODUCT VIEWS



TOP VIEW



FRONT VIEW



SIDE VIEW

Dimensions rounded up to the nearest inch or millimeter.
Specifications subject to change without notice.

TECHNICAL SPECIFICATIONS

Exterior Dimensions

H:	78 5/8"	1997 mm
W:	54 1/8"	1375 mm
D:	29 3/4"	756 mm

Interior Dimensions

H:	59 5/8"	1515 mm
W:	50"	1270 mm
D:	24 7/8"	633 mm

Usable Interior Capacity

H:	53 1/4"	1355 mm
W:	50"	1270 mm
D:	24 7/8"	633 mm

Usable Volume

38.46 ft ³
1089.29 lts

Capacity 20 oz. Bottle

Flat: 480

Doors

2

Doors Construction

Stainless Steel Frame

Shelves

10

Shelf Size & Guage

W:	24 1/4"	615 mm
D:	19 3/4"	501 mm

REFRIGERATION PERFORMANCE DATA

Refrigerant R134a

0.075 kg

Energy Consumption

5.500 kWh/day*

Compressor Power

1/2 HP
600 watts

Condenser

3.5 Fin per Inch

Thermostat Setting

Default

Cut-Out

32°F (0°C)

Cut-In

44.6°F (7°C)

ELECTRICAL DATA

Power Supply

115v 60 Hz

AMPS

10.7 kWh/day

Cord Length

118'
3000mm

Lighting

220 Lux output
14 modules
6 LED per module

Plug Type

PC-731

Controller

Imbera ETC1H controller
Pre-programmed temperatures

LOGISTIC DATA

Trailer Loads

53':	30
40':	24

Unit Weight w/packaging

501.8 Lbs
227.6 kg

Dimensions w/packaging

H:	82 1/2"	2097 mm
W:	56 1/2"	1432 mm
D:	31 3/8"	798 mm

Customer Service: 866-548-5770 | WWW.IMBERAFOODSERVICE.COM

Three year limited warranty is included on all parts and labor. An additional two year warranty is issued on the compressor (USA & Canada only).

Operators must follow installation and operational guidelines per Imbera Users Manual.

Each cooler must have its own power supply, otherwise warranty will be void.

*Energy consumption based on ANSI/ASHRAE Standard 72-2005.

BMAD System (Low maintenance high performance).
Dimensions rounded up to the nearest inch or millimeter.
Specifications subject to change without notice.